

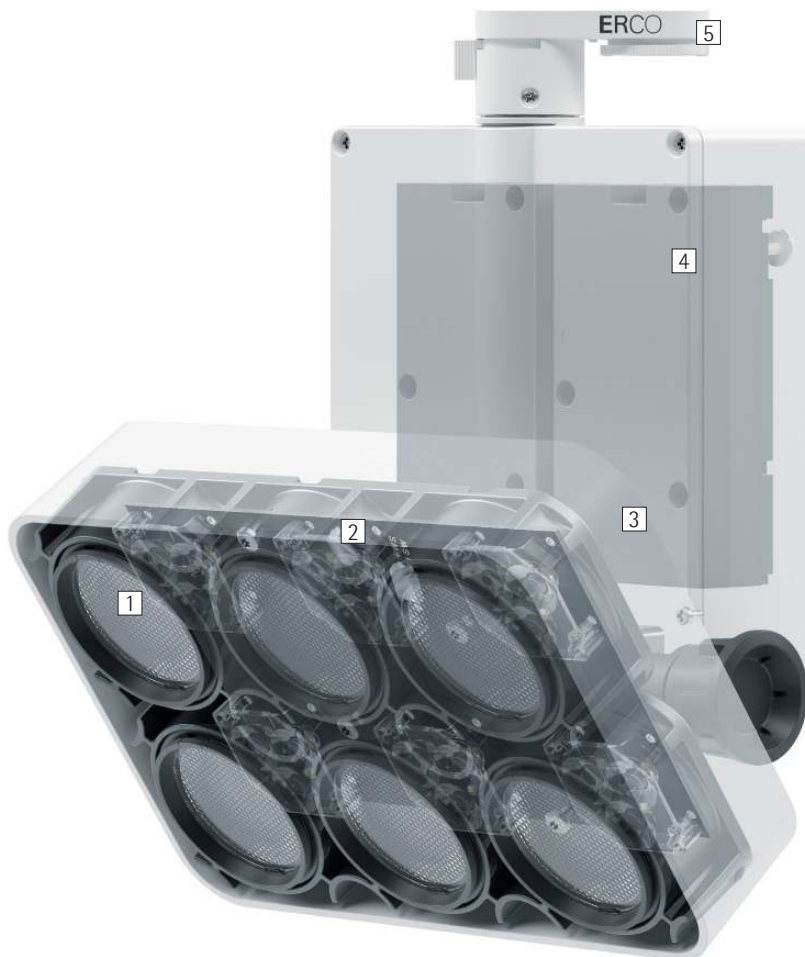


Stella – For high rooms and high demands

High output, efficient and precise accent lighting

High lumen-output luminaires are needed for large lighting distances and high rooms – e.g. for displaying large sculptures in the foyer of a museum or for uniform wallwashing in an airport. Stella are precisely these high output spotlights, floodlights and wallwashers for track. The Stella range consists of two sizes and all light distributions within the ERCO system of luminaires generated by highly efficient Spherolit lens optics. As a result, complex lighting tasks can be flexibly and

consistently resolved. The simple technical design of the cast aluminium housing ensures optimum heat management and thus a long service life.



Structure and characteristics

The features described here are typical of products in this range. Special versions may offer additional or varying features. A comprehensive description of the features of individual products can be found on our website.

1 ERCO Spherolit lens

- Light distributions: narrow spot, spot, flood, wide flood, extra wide flood, oval flood or wallwash
- Oval flood 360° rotation

2 ERCO LED-module

- High-power LEDs: warm white (2700K or 3000K) or neutral white (3500K or 4000K)
- Collimating lens made of optical polymer

3 Housing and luminaire head

- White (RAL9002), black or silver
- Cast aluminium, powder-coated
- Luminaire head pivotable from 0° to 90°. Screw for setting the inclination angle
- Housing can be rotated through 360° on the adapter
- Internal wiring

4 Control gear

- phase dimmable+On-board Dim, DALI dimmable or Casambi Bluetooth
- Phase dimmable + On-board Dim version: Dimming with external dimmers (trailing edge) possible and rotary control for brightness control on the luminaire

5 ERCO 3-circuit adapter or ERCO DALI adapter

Variants on request

- Housing: 10,000 further colours
- Please contact your ERCO consultant.



Design and application:
www.erco.com/stella

Stella for track 220-240V



Large lumen packages for very high illuminances

The attention of the viewer can be focused via contrasting accents. ERCO has high-performance luminaires with large lumen packages in its range for this purpose.

Oval flood freely rotatable

The oval flood Spherolit lens can be freely rotated with round luminaire heads to optimally match the lighting to various objects.

Special characteristics



Large lumen packages for very high illuminances



Oval flood, freely rotatable



ERCO high-power LEDs



Efficient Spherolit technology



Different light distributions



Different light colours



Excellent thermal management



EMC-optimised



Various housing colours



Various construction sizes



Pivotable through 90°



Accessory for maximum visual comfort



Phase dimmable + On-board Dim



DALI dimmable

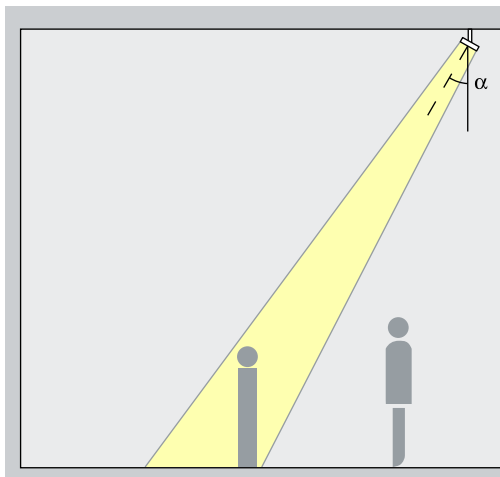


Casambi Bluetooth

Stella for track 220-240V – Luminaire arrangement

Spotlights

Narrow spot, Spot, Flood



Accentuation

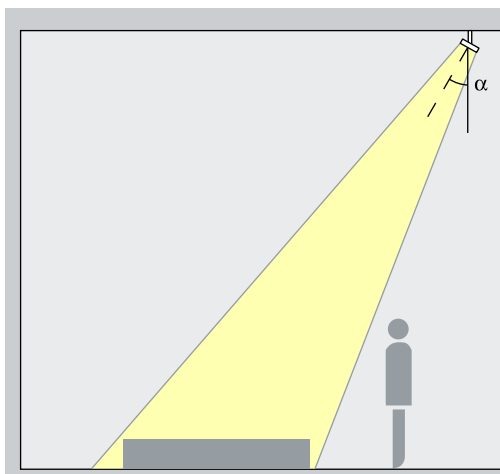
Exhibits and architectural details are effectively accentuated by Stella spotlights mounted at great height. The ideal angle of tilt (α) for this is around 30° . The object is modelled without distorting the effect as a result of excessive shadowing.

Arrangement: $\alpha = 30^\circ$

Application area: Luminaires with narrow spot and spot distributions are ideal particularly for accentuation from room heights above 8m.

Floodlights

Wide flood, Extra wide flood, Oval flood



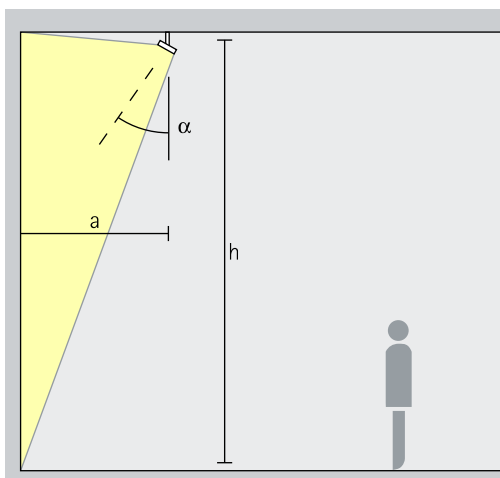
Washlighting

The ideal angle of tilt (α) for washlighting of large areas or objects is around 30° .

Arrangement: $\alpha = 30^\circ$

Lens wallwashers

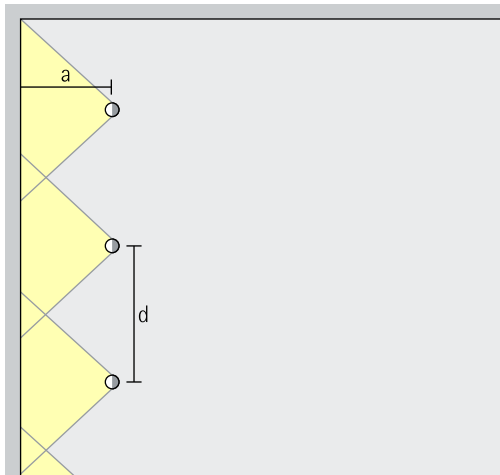
Wallwash



Wallwashing

For uniform vertical lighting, the distance to the wall (a) of Stella lens wallwashers should be around one third of the room height (h). This results in an angle of tilt (α) of approx. 35° .

Arrangement: $a = 1/3 \times h$ or $\alpha = 35^\circ$



For good longitudinal uniformity, the spacing (d) of Stella lens wallwashers may be up to 1.2 times the offset from the wall (a).

Arrangement: $d \leq 1.2 \times a$

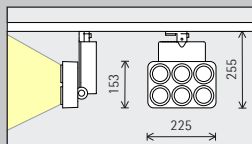
Optimal wall offset and luminaire spacing values are indicated in the wallwasher tables on the product data sheets.

Neresheim Abbey,
Neresheim. Archi-
tecture: Balthasar
Neumanns, Georg
Dehio. Photogra-
phy: Sebastian
Mayer, Berlin.

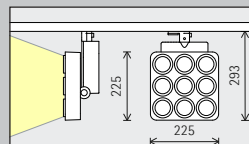


Stella for track 220-240V

Construction size



225mm/153mm



225mm/225mm

LED module Maximum value at 4000K CRI 82

36.4W/4716lm	28.3W/3668lm (Narrow spot)
55.9W/6640lm	38.3W/4651lm (Narrow spot)

73.8W/8969lm	74.6W/8854lm (Narrow spot)
--------------	----------------------------

Light colour

	2700K CRI 92		3500K CRI 92
	3000K CRI 92		4000K CRI 82
	3000K CRI 97		4000K CRI 92

	2700K CRI 92		3500K CRI 92
	3000K CRI 92		4000K CRI 82
	3000K CRI 97		4000K CRI 92

Light distribution

Spotlights	Floodlights
Narrow spot	Wide flood
Spot	Extra wide flood
Flood	Oval flood
Lens wallwashers	
Wallwash	

Spotlights	Floodlights
Narrow spot	Wide flood
Spot	Extra wide flood
Flood	Oval flood
Lens wallwashers	
Wallwash	

Control

	Phase dimmable + On-board Dim
	DALI
	Casambi Bluetooth

	Phase dimmable + On-board Dim
	DALI
	Casambi Bluetooth

Colour (housing)

	White		Silver
	Black		10,000 colours *

	White		Silver
	Black		10,000 colours *

Accessories

	Lenses		Honeycomb anti-glare screen
	Snoots		Honeycomb anti-glare screen
	Cross-baffle		



Cathedral, Siena
Photography:
Frieder Blickle,
Hamburg.

* available on request

Article numbers and planning data:
www.erco.com/016766

Design and application:
www.erco.com/stella



